



Respect, Believe, Achieve



Year 2 Hot and Cold

- *Locating the poles and the equator
- *Identifying hot and cold areas of the world






As a Geographer, what do I already know?

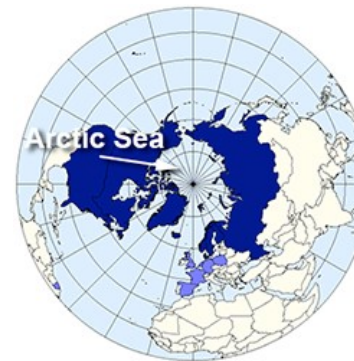
- ◆ In Year 1, we learnt about the weather and the four seasons.
- ◆ We also used globes, maps and atlases to locate countries of the UK and their capital cities. We talked about the weather in these countries/capital cities.

Key Words

Climate	Climate is the average measurements of temperature, wind, humidity, snow, and rain in a place over the course of years. Climate is like the weather, but over a long time.
Arctic	The Arctic is the area around the Earth's North Pole.
Antarctic	Its means "opposite to the Arctic," and so is the region around the South Pole.
Equator	The Equator is an imaginary circle around the middle of Earth.
Humid	When there is a lot of moisture in the air, it is humid. The air in a rain forest is humid, the air in a desert is dry.
Tropical	The word Tropical specifically means places near the equator. The word is also sometimes used in a general sense for a tropical climate, a climate that is warm to hot and moist year-round. This includes tropical rainforests with lush vegetation.

Key Skills	
	<p style="text-align: center;"><u>Knowledge Location</u></p> <p>I know the four compass points NSEW.</p> <p>I know where in the world the North and South Poles and Equator are.</p>
	<p style="text-align: center;"><u>Understanding Place</u></p> <p>I can identify hot & cold areas of the world (using globes and atlases) in relation to the Equator & North & South Poles.</p> <p>I can describe some differences between places near the Equator and at the poles.</p>
	<p style="text-align: center;"><u>Enquiry and Skills</u></p> <p>I can use atlases, maps (scaled 1:1000 - 1:1250) and globes to identify and describe some places and features.</p> <p>I can use aerial images to help me describe what a place is like and locate key features.</p>

Key information—What do I need to know?
<ul style="list-style-type: none"> ◆ That the four compass points are NSEW and I can locate these on a compass. ◆ Where the North and South poles and equator are on a globe/atlas. ◆ That both the Arctic (North Pole) and the Antarctic (South Pole) are cold because they don't get any direct sunlight. It is warm near the equator because the sun is more directly overhead. ◆ That around the Equator we have tropical climates which are hot and humid, this is where you'll find the world's rainforests. These tropical rainforests are found near the equator due to the amount of rainfall and the amount of sunshine these areas receive. ◆ The poles have polar climates which experience long periods of extreme cold. Life in the planet's polar regions can be incredibly difficult. Bitterly cold winds whip across the landscape. Winter temperatures can reach deep into the negatives, and the winter night can last for months. Polar regions have icy landscapes and only certain types of plants are able to grow here.



As a Geographer, here's the knowledge, skills and understanding I will have by the end of the unit:

1. I will know the four compass points NSEW.
2. I will know where the North and South poles are as well as the Equator on a globe/atlas.
3. I will be able to identify some hot and cold countries on a map/atlas based on their distance from the Equator and poles.
4. I will be able to describe what the climate and plant/animal life is like near the poles and the Equator.
5. I will be able to talk about the physical geography of these places by looking at aerial images.
6. I will be able to explain the differences between places near the poles and places near the Equator.